



**pronadisa**  
Micro & Molecular Biology



# Life is a great *Discovery*

Media for  
Industrial Microbiology

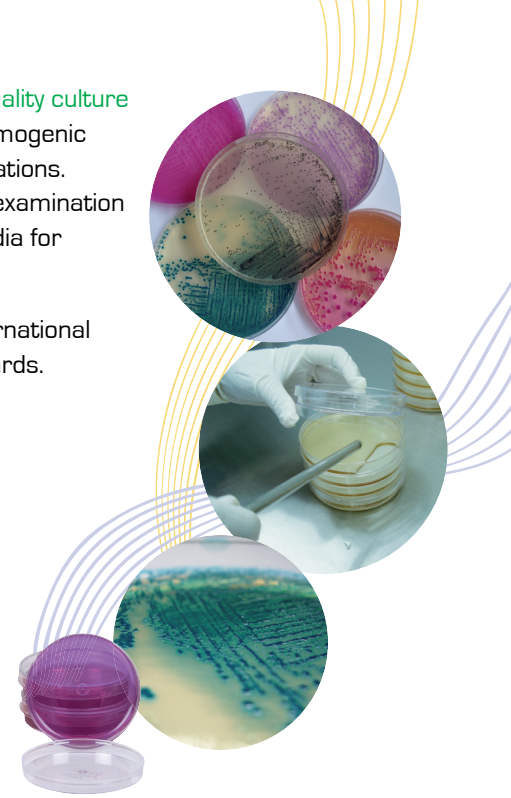


Laboratorios CONDA, one of the world leaders in the **design and manufacturing of high quality culture media**, currently offers more than 400 different products, among which you will find chromogenic media, ISO-formulated media and custom-made media for many different industrial applications. From hygiene control, through food and beverage poisoning prevention, to microbiological examination of cosmetic and pharmaceutical products, CONDA supplies a wide variety of different media for each field so that customers can find the most suitable product for their needs.

CONDA complies with the ISO 9001 standard, and our products comply with various international standards such as ISO, the European Pharmacopoeia, FDA, APHA, USP and AOAC standards.

Strict quality control procedures are adopted prior to, during and after the manufacturing process to ensure quality products and batch-to-batch consistency. We also exert tight control over selection and treatment of all raw materials and components (peptones, carbohydrates, minerals, chemicals, agar and other additives) used in the manufacturing process. Physical-chemical characteristics are tested, and media also undergo additional microbiological tests that guarantee growth, differentiation, biochemical performance, recovery of small inocula, selectivity, etc. A quality certificate is supplied with each product.

Our reputation and success throughout the world are the result of a combination of uncompromising quality systems, technical expertise and innovative thinking.



## Index

### media for industrial microbiology

**3** Meat & Fish Industry

**6** Water & Beverages

**8** Dairy Products

**11** Bakery

**13** Processed Foods

**15** Beer Industry

**16** Waste Water

**18** Cosmetic Industry

**19** Pharmaceutical Industry

**20** Microbiology Dehydrated Culture Media Guide

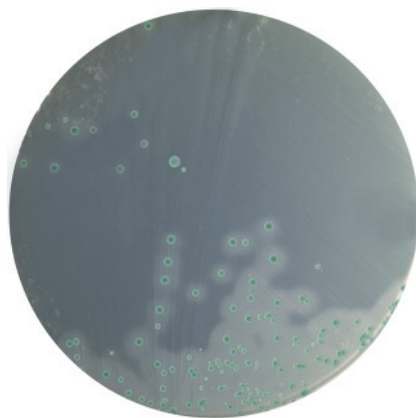
# Analysis chart

## Industries and related bacteria

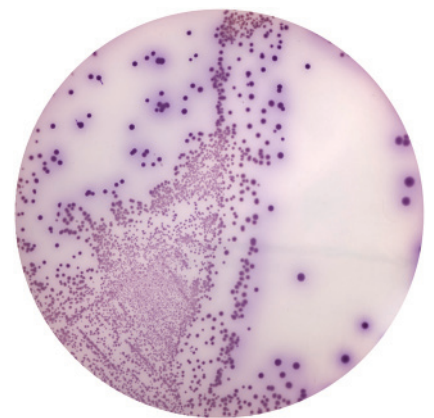
	Acid tolerant pathogens	Aerobes mesophiles	Anaerobes count	Antibiotic assay	Bacillus cereus	Beer industry process	Campylobacter	Clostridium perfringens	Clostridium sulfite reducers	Clostridium tyrobutyricum	Coliforms	Cosmetic testing	Enterobacter sakazakii	Enterobacteria	Enterococci	Escherichia coli	Lactobacillus	Legionella	Listeria monocytogenes	Pseudomonas aeruginosa	Salmonella/Shigella	Staphylococcus aureus	Sterility testing	Streptococcus thermophilus	Vibrio	Yeast and molds	Yersinia
Meat & Fish Industry		●			●		●	●	●	●			●			●	●		●	●	●	●			●	●	●
Water & Beverages	●	●						●	●		●			●	●	●		●	●	●						●	
Dairy Products		●					●	●	●	●		●	●	●	●	●				●	●	●		●		●	●
Bakery		●			●			●		●			●	●					●	●	●					●	
Processed Foods		●								●			●	●	●				●	●	●					●	●
Beer Industry						●							●	●		●			●							●	
Waste Water		●	●								●		●	●	●				●						●		
Cosmetic Industry			●								●	●	●	●		●			●	●	●					●	
Pharmaceutical Industry	●	●	●										●			●				●	●	●	●			●	



*Escherichia coli* ATCC 29522



*Listeria monocytogenes* ATCC 19111

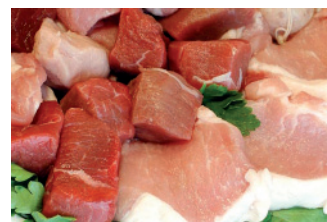
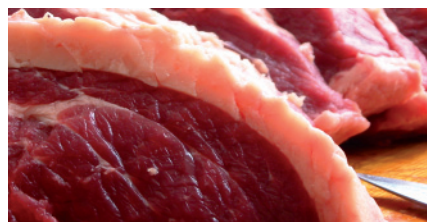


*Salmonella enteritidis* ATCC 13076

# Meat & Fish Industry

dehydrated culture media and detected bacteria

	Cat. No.	Suppl. Cat. No.	Uses	Ref. Method	Aerobes mesophiles	Bacillus cereus	Campylobacter	Clostridium perfringens	Clostridium sulfite reducers	Coliforms	Enterobacteria	Escherichia coli	Lactobacillus	Listeria monocytogenes	Pseudomonas aeruginosa	Salmonella/Shigella	Staphylococcus aureus	Vibrio	Yeast and molds	Yersinia
Acetate Differential Agar	1192		Differentiation									●				●				
Alkaline Peptone Water	1407		Enrichment Medium															●		
Anaerobic Agar	1000		Cultivation				●	●												
Bacillus Cereus Selective Agar Base	1124	6021/5152	Enumeration / Isolation		●															
Baird Parker Agar Base	1319	5129	Selective Isolation	ISO 6888-1													●			
Baird Parker Agar Base (RPF)	1319	6024	Selective Isolation	ISO 6888-2													●			
BCP Glucose Agar	1320		Differentiation / Enumeration	ISO 21528:2							●									
Bismuth Sulfite Agar (Wilson Blair)	1011		Selective Isolation	USP												●				
Blood Agar Base No. 2	1328		Confirmation	ISO 7932	●															
Blood Free Campylobacter Agar Base	1129	6053	Selective Isolation			●														
Brain Heart Infusion Broth	1331		Confirmation	ISO 6888-1													●			
Brilliant Green Agar	1078		Selective Isolation	Eur. Pharma												●				
Brilliant Green Selenite Broth	1221		Selective Enrichment													●				
Brilliant Green Selenite Broth II	1219		Selective Enrichment													●				
Brilliant Green Tetrathionate Bile Broth	1253		Selective Enrichment	Eur. Pharma												●				
Buffered Peptone Water	1402		Diluent	ISO 6579												●				
Carbohydrates Utilization Broth	1342		Confirmation	ISO 11290-2										●						
Chapman Stone Agar	1017		Selective Isolation / Differentiation														●			
DCLS Agar	1045		Selective Isolation													●				
Desoxycholate Citrate Agar	1067		Selective Isolation	Eur. Pharma												●				
Desoxycholate Lactose Agar	1025		Isolation/Enumeration							●										
Dextrose Agar	1021		Total Count		●															
Differential Reinforced Clostridial Broth	1416		Enumeration				●	●												
E. Coli Coliforms Chromogenic Medium	1340		Selective Detection							●	●									
EE Broth	1362		Enumeration	ISO 21528-1							●									
Endo Agar Base	1118		Confirmation / Differentiation							●										
Ewing Malonate Broth Modified	1212		Differentiation							●						●				
Fraser Broth Base	1182	6001	Enrichment Medium	ISO 11290-1										●						
Gelatin Lactose Medium	1526		Confirmation				●													



# Meat & Fish Industry

	Cat. No.	Suppl. Cat. No.	Uses	Ref. Method	Aerobes mesophiles	Bacillus cereus	Campylobacter	Clostridium perfringens	Clostridium sulfite reducers	Coliforms	Enterobacteria	Escherichia coli	Lactobacillus	Listeria monocytogenes	Pseudomonas aeruginosa	Salmonella/Shigella	Staphylococcus aureus	Vibrio	Yeast and molds	Yersinia
Giolitti - Cantoni Broth	1287	5208	Detection	ISO 6888/5944													●			
Hektoen Enteric Agar	1030		Isolation/Differentiation								●									
Irgasan Ticarcillin & Potassium Chlorate	1361	6051	Enrichment Medium	ISO 10273																●
Kligler Iron Agar	1364		Presumptive Isolation	ISO 10273																●
Koser Citrate Broth	1200		Differentiation									●								
Lactose Broth	1206		Cultivation	Eur. Pharma					●								●			
Lactose Sulfite Broth Base	1009		Selective Detection/Enumeration	Eur. Pharma			●													
Levine Agar (EMB)	1050		Isolation/Differentiation								●									
Listeria Agar Base Oxford	1133	6003	Selective Detection	ISO 11290-1										●						
Listeria Enrichment Broth Base Fraser	1120	6001/6002	Enrichment Medium	ISO 11290-1										●						
Listeria Agar Base Palcam	1141	6004	Selective/Differential Medium	ISO 11290-2										●						
Listeria Chromogenic Agar Base	1345	6031/6040	Selective Detection / Enumeration	ISO 11290-2										●						
Lysine Decarboxylase Broth	1208		Identification								●						●			
Lysine Decarboxylase Broth	1176		Biochemical Confirmation	ISO 6579													●			
Lysine Iron Agar	1044		Differentiation						●								●			
Macconkey Agar	1052		Isolation/Identification	Eur. Pharma							●									
Malt Extract Agar	1038		Cultivation																	●
Malt Extract Broth	1245		Isolation/ Enumeration																	●
Mannitol Nitrate Motility Medium	1509		Differentiation								●									
Mannitol Salt Agar (MSA)	1062		Isolation	Eur. Pharma													●			
Mio Medium	1510		Identification								●									
Moeller KCN Broth Base	1112		Differentiation								●									
Mossel EE Broth	1202		Selective Enrichment	Eur. Pharma							●						●			
MRS Agar	1043		Cultivation										●							
MRS Broth	1215		Cultivation										●							
MRSV Medium	1376		Detection of Motility														●			
MR-VP Medium	1512		Differentiation								●									
Muller Kauffmann Broth Base with Brilliant Green & Novobiocine (MKTTN)	1173		Selective Enrichment	ISO 6579													●			
Muller Kauffmann Tetrathionate Broth Base	1130		Selective Enrichment														●			
Nitrate Motility Base Medium	1565		Confirmation				●													
Nutrient Agar	1060		Cultivation	ISO 6579													●			
Nutrient Agar with Sodium Chloride	1355		Confirmation	ISO 21528-1							●									
OGA Medium [Oxytetracycline Glucose Agar]	1527	6018	Enumeration / Selection																	●
Peptone Sorbitol & Biliar Salts Broth (PSB Broth)	1298		Diluent	ISO 10273																●
Potato Dextrose Agar	1022		Identification/Cultivation /Enumeration	Eur. Pharma																●

# Meat & Fish Industry

	Cat. No.	Suppl. Cat. No.	Uses	Ref. Method	Aerobes mesophiles	Bacillus cereus	Campylobacter	Clostridium perfringens	Clostridium sulfite reducers	Coliforms	Enterobacteria	Escherichia coli	Lactobacillus	Listeria monocytogenes	Pseudomonas aeruginosa	Salmonella/Shigella	Staphylococcus aureus	Vibrio	Yeast and molds	Yersinia
Potato Dextrose Broth	1261		Cultivation																	●
Pseudomonas Agar Base	1356	6036	Isolation	ISO 13720											●					
Rappaport Soy Broth (Vassiliadis)	1174		Selective Enrichment	ISO 6579												●				
Reinforced Clostridial Medium	1007		Cultivation/Enumeration	Eur. Pharma			●	●												
Rogosa SL Agar	1096		Selective Cultivation										●							
Rogosa SL Broth	1234		Selective Cultivation										●							
Rose Bengal Agar + Chloramphenicol	1081		Cultivation/Selective Isolation																	●
Salmonella Chromogenic Agar	1122		Isolation														●			
Salmonella Shigella Agar (SS)	1064		Selective Isolation														●			
Salmonella Shigella Agar with Sodium Desoxycholate & Calcium Chloride	1360		Selective Isolation/Differentiation	ISO 10273																●
Salmonella Shigella Modified Agar	1186		Selective Isolation														●			
San Francisco Medium	1413		Cultivation										●							
SBF Broth	1384		Enrichment Medium														●			
Selenite Cystine Broth	1220		Selective Enrichment														●			
Sim Medium	1514	5205	Identification/Differentiation								●	●					●			
Sodium Selenite Broth	1222		Selective Isolation														●			
SPS Agar	1082		Isolation				●													
Standard Methods Agar (PCA)	1056		Total Count	ISO 4833	●															
Staphylococcus Agar No. 110	1032		Isolation														●			
TBX Chromogenic Agar	1151		Selective Detection/Enumeration	ISO 16649-2								●								
TCBS Agar	1074		Isolation																	●
Tetrathionate Broth Base (Muller Kauffmann)	1114		Selective Enrichment														●			
Thioglycollate USP Medium	1533		Cultivation	USP ISO 7937			●													
Triple Sugar Iron Agar (TSI)	1172		Confirmation	ISO 6579													●			
Tryptone Soy Yeast Extract Agar (TSYEA)	1398		Cultivation	ISO 11290-2										●						
Tryptone Soy Yeast Extract Broth (TSYEB)	1339		Confirmation	ISO 11290-2										●						
Tryptose Sulfite Broth	1378		Selective Medium				●													
TSC Agar Base	1029	6020/5152	Detection / Enumeration	ISO 7937			●													
TSN Agar	1075		Selective Isolation				●													
Urea Agar Base (Christensen)	1110		Differentiation								●									
Urea Indol Broth	1227	5205	Identification								●									
Violet Red Bile Agar with Glucose (VRBG)	1092		Cultivation / Enumeration								●									
Violet Red Bile Agar with Lactose (VRBL)	1093		Selective Detection / Enumeration	ISO 4832					●											
XLD Agar	1274		Selective Isolation	ISO 6579													●			
XLT4 Agar Base	1159	6062	Isolation														●			
Yersinia Selective Agar Base	1126	6033	Selective Medium																	●

# Water & Beverages

dehydrated culture media and detected bacteria

	Cat. No.	Suppl. Cat. No.	Uses	Ref. Method	Acid tolerant pathogens	Aerobes mesophiles	Clostridium perfringens	Clostridium sulfite reducers	Coliforms	Enterobacteria	Enterococci	Escherichia coli	Legionella	Listeria monocytogenes	Pseudomonas aeruginosa	Yeast and molds
A1 Medium	1252		Detection						●							
Acetamide Agar	1391		Confirmation													●
Acetamide Broth	1155		Confirmation	UNE-EN 12780												●
Anaerobic Agar	1000		Cultivation			●	●									
Asparagine Broth	1207		Presumptive Identification / Enumeration													●
Azide Dextrose Broth	1422		Selective Enrichment								●					
BCP Agar	1051		Isolation						●							
Bile Esculin Azide Agar	1005		Selective Isolation / Presumptive Identification	ISO 7899-2							●					
Brilliant Green Bile Agar	1010		Enumeration						●							
Brilliant Green Bile Broth 2%	1228		Detection						●							
Carbohydrates Utilization Broth	1342		Confirmation	ISO 11290-1										●		
Cetrimide Agar Base	1102		Selective Isolation / Identification	Eur. Pharma												●
Clostridium Perfringens Agar Base (m-CP)	1132		Enumeration / Isolation			●										
Desoxycholate Lactose Agar	1025		Isolation / Enumeration						●							
Dextrose Agar	1021		Total Count			●										
E. Coli Coliforms Chromogenic Medium	1340		Selective Detection						●			●				
EC Medium	1522		Enumeration / Differentiation						●							
Endo Agar Base	1118		Confirmation / Differentiation						●							
Endo Les Agar Base	1137		Detection / Enumeration						●							
Enterococcus Confirmatory Agar	1018		Confirmation								●					
Eosin Methylene Blue Agar (EMB)	1039		Isolation / Differentiation						●							
EVA Broth (Ethyl Violet Azide Broth)	1230		Confirmation								●					
Fecal Coliforms Agar Base (m-FC)	1127	6023	Detection / Enumeration						●							
Fecal Coliforms Broth Base	1121	6023	Detection / Enumeration						●							
Gelatin Lactose Medium	1526		Confirmation			●										
King B Medium	1154		Identification / Enumeration	UNE-EN 12780												●
Koser Citrate Broth	1200		Differentiation									●				
Lactose Broth	1206		Cultivation	Eur. Pharma					●							
Lactose Sulfite Broth Base	1009		Selective Detection/Enumeration	Eur. Pharma		●										
Lauryl Sulfate Agar	1309		Selective Isolation/Enumeration						●							
Lauryl Sulfate Broth	1310		Detection						●							
Legionella CYE Agar Base	1311	6022/ 6025	Selective Cultivation	ISO 11731									●			
Listeria Agar Base Oxford	1133	6003	Selective Detection	ISO 11290-1										●		
Listeria Enrichment Broth Base Fraser	1120	6001/ 6002	Enrichment Medium	ISO 11290-1										●		
Listeria Agar Base Palcam	1141	6004	Selective / Differential Medium	ISO 11290-2										●		
Listeria Chromogenic Agar Base	1345	6031/ 6040	Selective Detection / Enumeration	ISO 11290-2										●		

# Water & Beverages

	Cat. No.	Suppl. Cat. No.	Uses	Ref. Method	Acid tolerant pathogens	Aerobes mesophiles	Clostridium perfringens	Clostridium sulfite reducers	Coliforms	Enterobacteria	Enterococci	Escherichia coli	Legionella	Listeria monocytogenes	Pseudomonas aeruginosa	Yeast and molds
Lysine Decarboxylase Broth	1208		Identification							●						
Macconkey Agar No. 2	1035		Identification								●					
Macconkey Agar w/o Crystal Violet	1037		Cultivation / Differentiation								●					
Macconkey Broth	1210		Detection	Eur. Pharma					●							
m-El Chromogenic Agar Base	1412		Detection / Enumeration							●						
Minerals Modified Glutamate Broth	1365		Enumeration						●							
MR-VP Medium	1512		Differentiation									●				
Nitrate Motility Base Medium	1565		Confirmation			●										
Nutrient Agar	1156		Identification / Enumeration	UNE-EN 12780												●
Orange Serum Agar	1307		Isolation / Detection		●											
Peptone Water with Lactose	1357		Confirmation	ISO 9308-1					●							
Pseudomonas CN Agar Base	1153		Identification / Enumeration	UNE-EN 12780												●
R2A Agar	1071		Total Count	Eur. Pharma		●										
Sim Medium	1514	5205	Identification/Differentiation									●				
Simmons Citrate Agar	1014		Differentiation									●				
Slanetz-Bartley Medium	1109		Detection / Enumeration	ISO 7899-2							●					
Triple Sugar Iron Agar (TSI)	1046		Identification/Differentiation	Eur. Pharma								●				
Trypticasein Glucose Extract Agar	1041		Enumeration			●										
Tryptone Bile Salts Agar	1013		Detection / Enumeration	ISO 9308-1					●			●				
Tryptone Soy Agar	1138		Detection / Enumeration	ISO 9308-1					●			●				
Tryptone Soy Yeast Extract Agar (TSYEA)	1398		Cultivation	ISO 11290-2											●	
Tryptone Soy Yeast Extract Broth (TSYEB)	1339		Confirmation	ISO 11290-2											●	
Tryptophan Culture Broth	1237		Detection	ISO 9308-1					●			●				
Tryptose Sulfite Broth	1378		Selective Medium				●									
TTC Chapman Agar	1076	6030	Enumeration	ISO 9308-1					●							
Urea Indol Broth	1227	5205	Identification									●				
Violet Red Bile Agar with Glucose (VRBG)	1092		Cultivation / Enumeration	Eur. Pharma						●		●				
Wort Agar	1316		Cultivation / Enumeration													●
Wort Broth	1444		Enumeration / Count													●
XLD Agar (Xylose Lysine Desoxycholate)	1080		Isolation	Eur. Pharma						●						
XLT4 Agar Base	1159	6062	Isolation							●						
Yeast Extract Agar	1049		Enumeration	ISO 6222		●										●





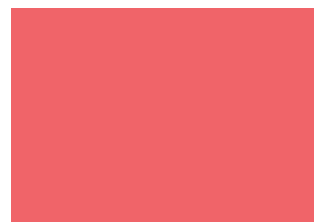
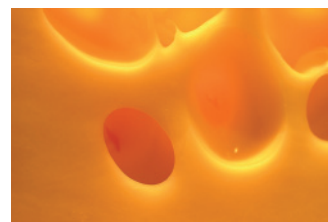
# Dairy Products

dehydrated culture media and detected bacteria

	Cat. No.	Suppl. Cat. No.	Uses	Ref. Method	Aerobes mesophiles	Campylobacter	Clostridium sulfite reducers	Clostridium tyrobutyricum	Coliforms	Enterobacter sakazakii	Enterobacteria	Enterococci	Escherichia coli	Lactobacillus	Listeria monocytogenes	Salmonella/Shigella	Staphylococcus aureus	Streptococcus thermophilus	Yeast and molds	Yersinia
Acetate Differential Agar	1192		Differentiation										●			●				
Anaerobic Agar	1000		Cultivation			●														
Baird Parker Agar Base	1319	5129	Selective Isolation	ISO 6888-1													●			
Baird Parker Agar Base (RPF)	1319	6024	Selective Isolation	ISO 6888-2													●			
Bile Esculin Agar	1031		Isolation/Identification								●									
Bismuth Sulfite Agar (Wilson Blair)	1011		Selective Isolation	USP													●			
Blood Free Campylobacter Agar Base	1129	6053	Selective Isolation			●														
Brilliant Green Selenite Broth	1221		Selective Enrichment														●			
Brilliant Green Tetrathionate Bile Broth	1253		Selective Enrichment	Eur. Pharma													●			
Bryant & Burkey Base Broth (Modified with Resazurine)	1247		Detection				●													
Buffered Peptone Water	1402		Diluent	ISO 6579													●			
Buti Medium for Milk	1184		Detection				●										●			
Carbohydrates Utilization Broth	1342		Confirmation	ISO 11290-2											●					
Chapman Stone Agar	1017		Selective Isolation / Differentiation														●			
Chloramphenicol Agar	1301		Selective Isolation/ Enumeration	ISO 7954																●
DCLS Agar	1045		Selective Isolation														●			
Desoxycholate Agar	1020		Isolation / Enumeration					●												
Desoxycholate Citrate Agar	1067		Selective Isolation	Eur. Pharma													●			
Desoxycholate Lactose Agar	1025		Isolation/ Enumeration					●												
Dextrose Agar	1021		Total Count		●															
Differential Reinforced Clostridial Broth	1416		Enumeration			●														
E. Coli Coliforms Chromogenic Medium	1340		Selective Detection					●				●								
EE Broth	1362		Enumeration	ISO 21528-1						●										
Elliker Medium	1539		Cultivation										●							
Endo Agar Base	1118		Confirmation/ Differentiation					●												
Enterobacter Sakazakii Isolation Agar Chromogenic (ESIA)	1446		Isolation	ISO 22964					●											
ESTY Broth	1254		Selective Cultivation															●		
ESTY Medium	1555		Selective Enumeration															●		
Ewing Malonate Broth Modified	1212		Differentiation					●									●			
Fraser Broth Base	1182	6001	Enrichment Medium	ISO 11290-1										●						
Giolitti - Cantoni Broth	1287	5208	Detection	ISO 6888/5944													●			
Glucose Chloramphenicol Agar	1094		Selective Isolation / Enumeration																	●
Glucose Chloramphenicol Broth	1258		Selective Isolation / Enumeration																	●
Hektoen Enteric Agar	1030		Isolation/ Differentiation							●										
Irgasan Ticarcillin & Potassium Chlorate	1361	6051	Enrichment Medium	ISO 10273																●

# Dairy Products

	Cat. No.	Suppl. Cat. No.	Uses	Ref. Method	Aerobes mesophiles	Campylobacter	Clostridium sulfite reducers	Clostridium tyrobutyricum	Coliforms	Enterobacter sakazakii	Enterobacteria	Enterococci	Escherichia coli	Lactobacillus	Listeria monocytogenes	Salmonella/Shigella	Staphylococcus aureus	Streptococcus thermophilus	Yeast and molds	Yersinia
CAA Confirmatory Agar	1027		Isolation/Confirmation								●									
CAA Presumptive Broth	1209		Presumptive Detection								●									
Kligler Iron Agar	1364		Presumptive Isolation	ISO 10273																●
Koser Citrate Broth	1200		Differentiation										●							
Lactose Broth	1206		Cultivation	Eur. Pharma				●								●				
Lauryl Sulfate Tryptose Broth Modified	1445		Selective Enrichment	ISO 22964					●											
Levine Agar (EMB)	1050		Isolation / Differentiation							●										
Listeria Agar Base Oxford	1133	6003	Selective Detection	ISO 11290-1											●					
Listeria Enrichment Broth Base Fraser	1120	6001/6002	Enrichment Medium	ISO 11290-1											●					
Listeria Agar Base Palcam	1141	6004	Selective/Differential Medium	ISO 11290-2											●					
Listeria Chromogenic Agar Base	1345	6031/6040	Selective Detection / Enumeration	ISO 11290-2											●					
Lysine Decarboxylase Broth	1208		Identification							●						●				
Lysine Decarboxylase Broth	1176		Biochemical Confirmation	ISO 6579												●				
M 17 Agar	1318		Cultivation/Enumeration														●			
Macconkey Agar	1052		Isolation / Identification	Eur. Pharma						●										
Macconkey Agar No. 2	1035		Identification								●									
Macconkey Broth	1210		Detection	Eur. Pharma				●												
Malt Extract Agar	1038		Cultivation																	●
Malt Extract Broth	1245		Isolation / Enumeration																	●
Mannitol Nitrate Motility Medium	1509		Differentiation							●		●								
Mannitol Salt Agar (MSA)	1062		Isolation	Eur. Pharma													●			
Mio Medium	1510		Identification							●		●				●				
Mossel EE Broth	1202		Selective Enrichment	Eur. Pharma				●												
MRS Agar	1043		Cultivation											●						
MRS Broth	1215		Cultivation											●						
MRSV Medium	1376		Detection													●				
MR-VP Medium	1512		Differentiation							●		●								
Muller Kauffmann Broth Base with Brilliant Green & Novobiocine (MKTTN)	1173		Selective Enrichment	ISO 6579												●				
Muller Kauffmann Tetrathionate Broth Base	1130		Selective Enrichment													●				
Nutrient Agar	1060		Cultivation	ISO 6579												●				
Nutrient Agar with Sodium Chloride	1355		Confirmation	ISO 21528-1						●										



# Dairy Products

	Cat. No.	Suppl. Cat. No.	Uses	Ref. Method	Aerobes mesophilus	Campylobacter	Clostridium sulfite reducers	Clostridium tyrobutyricum	Califorms	Enterobacter sakazakii	Enterobacteria	Enterococi	Escherichia coli	Lactobacillus	Listeria monocytogenes	Salmonella/Shigella	Staphylococcus aureus	Streptococcus thermophilus	Yeast and molds	Yersinia
OGA Medium (Oxytetracycline Glucose Agar)	1527	6018	Enumeration / Selection																	●
Osmophilic Agar	1057		Cultivation																	●
Peptone Sorbitol & Biliar Salts Broth (PSB Broth)	1298		Diluent	ISO 10273																●
Potato Dextrose Agar	1022		Identification/Cultivation / Enumeration	Eur. Pharma																●
Potato Dextrose Broth	1261		Cultivation																	●
Rappaport Soy Broth (Vassiliadis)	1174		Selective Enrichment	ISO 6579												●				
Reinforced Clostridial Medium	1007		Cultivation / Enumeration	Eur. Pharma		●														
Rose Bengal Agar + Chloramphenicol	1081		Cultivation/Selective Isolation																	●
Rose Bengal Agar + Dichloran + Chloramphenicol (DRBC Agar)	1160		Selective Cultivation																	●
Rothe Broth (Glucose Broth with Azide)	1238		Enumeration								●									
Salmonella Chromogenic Agar	1122		Isolation													●				
Salmonella Shigella Agar with Sodium Desoxycholate & Calcium Chloride	1360		Selective Isolation/ Differentiation	ISO 10273																●
San Francisco Medium	1413		Cultivation										●							
SBF Broth	1384		Enrichment Medium														●			
Selenite Cystine Broth	1220		Selective Enrichment														●			
Sim Medium	1514	5205	Identification/Differentiation							●		●				●				
Sodium Selenite Broth	1222		Selective Isolation													●				
Standard Methods Agar (PCA)	1056		Total Count	ISO 4833	●															
Standard Methods Agar with Powdered Milk	1033		Total Count		●															
Staphylococcus Agar No. 110	1032		Isolation														●			
TBX Chromogenic Agar	1151		Selective Detection / Enumeration	ISO 16649-2								●								
Tetrathionate Broth Base (Mueller Kauffmann)	1114		Selective Enrichment													●				
Triple Sugar Iron Agar (TSI)	1172		Biochemical Confirmation	ISO 6579												●				
Tryptone Soy Yeast Extract Agar (TSYEA)	1398		Cultivation	ISO 11290-2											●					
Tryptone Soy Yeast Extract Broth (TSYEB)	1339		Confirmation	ISO 11290-2											●					
Urea Indol Broth	1227	5205	Identification							●		●			●					
Violet Red Bile Agar with Glucose (VRBG)	1092		Cultivation/Enumeration	Eur. Pharma						●										
Violet Red Bile Agar with Lactose (VRBL)	1093		Selective Detection/ Enumeration	ISO 4832				●												
Wort Agar	1316		Cultivation/Enumeration																	●
Wort Broth	1444		Enumeration / Count																	●
XLD Agar	1274		Selective Isolation	ISO 6579												●				
XL4 Agar Base	1159	6062	Isolation													●				
Yeast Extract Agar (for Molds)	1312		Cultivation																	●
Yersinia Selective Agar Base	1126	6033	Selective Medium																	●

# Bakery

dehydrated culture media and detected bacteria

	Cat. No.	Suppl. Cat. No.	Uses	Ref. Method	Aerobes mesophiles	Bacillus cereus	Clostridium sulfite reducers	Coliforms	Enterobacteria	Escherichia coli	Listeria monocytogenes	Salmonella/Shigella	Staphylococcus aureus	Yeast and molds
Anaerobic Agar	1000		Cultivation			●								
Bacillus Cereus Selective Agar Base	1124	6021/ 5152	Enumeration / Isolation		●									
Baird Parker Agar Base	1319	5129	Selective Isolation	ISO 6888-1									●	
Baird Parker Agar Base (RPF)	1319	6024	Selective Isolation	ISO 6888-2									●	
BCP Agar	1051		Isolation				●							
BCP Glucose Agar	1320		Differentiation / Enumeration	ISO 21528-2				●	●		●			
Bismuth Sulfite Agar (Wilson Blair)	1011		Selective Isolation	USP								●		
Brilliant Green Agar	1078		Selective Isolation	Eur. Pharma								●		
Brilliant Green Bile Broth 2%	1228		Detection				●							
Brilliant Green Selenite Broth	1221		Selective Enrichment									●		
Brilliant Green Tetrathionate Bile Broth	1253		Selective Enrichment	Eur. Pharma								●		
Carbohydrates Utilization Broth	1342		Confirmation	ISO 11290-2							●			
Chapman Stone Agar	1017		Selective Isolation / Differentiation										●	
Dextrose Agar	1021		Total Count		●									
Differential Reinforced Clostridial Broth	1416		Enumeration			●								
E. Coli Coliforms Chromogenic Medium	1340		Selective Detection					●		●				
EE Broth	1362		Enumeration	ISO 21528-1					●					
Fraser Broth Base	1182	6001	Enrichment Medium	ISO 11290-1							●			
Giolitti - Cantoni Broth	1287	5208	Detection	ISO 6888/5944									●	
Hektoen Enteric Agar	1030		Isolation / Differentiation						●			●		
Lactose Broth	1206		Cultivation	Eur. Pharma				●				●		
Lauryl Sulfate Agar	1309		Selective Isolation / Enumeration					●						
Levine Agar (EMB)	1050		Isolation / Differentiation						●					
Listeria Agar Base Oxford	1133	6003	Selective Detection	ISO 11290-1								●		
Listeria Enrichment Broth Base Fraser	1120	6001/ 6002	Enrichment Medium	ISO 11290-1								●		
Listeria Agar Base Palcam	1141	6004	Selective/Differential Medium	ISO 11290-2								●		
Listeria Chromogenic Agar Base	1345	6031/ 6040	Selective Detection / Enumeration	ISO 11290-2								●		
Lysine Decarboxylase Broth	1208		Identification						●			●		
Lysine Decarboxylase Broth	1176		Biochemical Confirmation	ISO 6579								●		
Macconkey Agar	1052		Isolation / Identification	Eur. Pharma					●					
Malt Extract Agar	1038		Cultivation											●



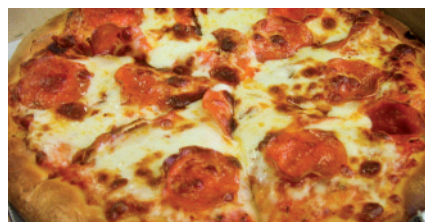
# Bakery

	Cat. No.	Suppl. Cat. No.	Uses	Ref. Method	Aerobes mesophiles	Bacillus cereus	Clostridium sulfite reducers	Coliforms	Enterobacteria	Escherichia coli	Listeria monocytogenes	Salmonella/Shigella	Staphylococcus aureus	Yeast and molds
Malt Extract Broth	1245		Isolation / Enumeration											●
Mannitol Nitrate Motility Medium	1509		Differentiation					●	●					
Mannitol Salt Agar (MSA)	1062		Isolation	Eur. Pharma									●	
Mio Medium	1510		Identification					●	●		●			
Moeller KCN Broth Base	1112		Differentiation					●	●		●			
Mossel EE Broth	1202		Selective Enrichment	Eur. Pharma			●							
MRSV Medium	1376		Detection									●		
MR-VP Medium	1512		Differentiation					●	●					
Muller Kauffmann Broth Base with Brilliant Green & Novobiocine (MKTTN)	1173		Selective Enrichment	ISO 6579								●		
Muller Kauffmann Tetrathionate Broth Base	1130		Selective Enrichment									●		
Nutrient Agar	1060		Cultivation	ISO 6579								●		
Nutrient Agar with Sodium Chloride	1355		Confirmation	ISO 21528-1				●						
OGA Medium (Oxytetracycline Glucose Agar)	1527	6018	Enumeration / Selection											●
Osmophilic Agar	1057		Cultivation											●
Potato Dextrose Agar	1022		Identification/Cultivation/Enumeration	Eur. Pharma										●
Potato Dextrose Broth	1261		Cultivation											●
Rappaport Soy Broth (Vassiliadis)	1174		Selective Enrichment	ISO 6579								●		
Reinforced Clostridial Medium	1007		Cultivation/Enumeration	Eur. Pharma			●							
Rose Bengal Agar + Chloramphenicol	1081		Cultivation/Selective Isolation											●
Rose Bengal Agar + Dichloran + Chloramphenicol (DRBC Agar)	1160		Selective Cultivation											●
Salmonella Chromogenic Agar	1122		Isolation									●		
SBF Broth	1384		Enrichment Medium									●		
Selenite Cystine Broth	1220		Selective Enrichment									●		
Sim Medium	1514	5205	Identification/Differentiation					●	●		●			
Sodium Selenite Broth	1222		Selective Isolation									●		
Staphylococcus Agar No. 110	1032		Isolation										●	
TBX Chromogenic Agar	1151		Selective Detection / Enumeration	ISO 16649-2					●					
Tetrathionate Broth Base (Muller Kauffmann)	1114		Selective Enrichment									●		
Triple Sugar Iron Agar (TSI)	1172		Biochemical Confirmation	ISO 6579								●		
Tryptone Soy Yeast Extract Agar (TSYEA)	1398		Cultivation	ISO 11290-2							●			
Tryptone Soy Yeast Extract Broth (TSYEB)	1339		Confirmation	ISO 11290-2							●			
Urea Agar Base (Christensen)	1110		Differentiation					●						
Urea Indol Broth	1227	5205	Identification					●	●		●			
Violet Red Bile Agar with Glucose (VRBG)	1092		Cultivation / Enumeration	Eur. Pharma				●						
Violet Red Bile Agar with Lactose (VRBL)	1093		Selective Detection / Enumeration	ISO 4832			●							
XLD Agar	1274		Selective Isolation	ISO 6579								●		
XLT4 Agar Base	1159	6062	Isolation									●		

# Processed Foods

dehydrated culture media and detected bacteria

	Cat. No.	Suppl. Cat. No.	Uses	Ref. Method	Aerobes mesophiles	Coliforms	Enterobacteria	Escherichia coli	Listeria monocytogenes	Salmonella/Shigella	Staphylococcus aureus	Yeast and molds	Yersinia
Baird Parker Agar Base	1319	5129	Selective Isolation	ISO 6888-1							●		
Baird Parker Agar Base (RPF)	1319	6024	Selective Isolation	ISO 6888-2							●		
BCP Agar	1051		Isolation			●							
BCP Glucose Agar	1320		Differentiation/Enumeration	ISO 21528-2			●	●		●			
Bismuth Sulfite Agar (Wilson Blair)	1011		Selective Isolation	USP						●			
Brilliant Green Agar	1078		Selective Isolation	Eur. Pharma						●			
Brilliant Green Bile Broth 2%	1228		Detection			●							
Brilliant Green Selenite Broth	1221		Selective Enrichment							●			
Brilliant Green Tetrathionate Bile Broth	1253		Selective Enrichment	Eur. Pharma						●			
Carbohydrates Utilization Broth	1342		Confirmation	ISO 11290-2					●				
Chapman Stone Agar	1017		Selective Isolation / Differentiation								●		
DCLS Agar	1045		Selective Isolation							●			
Desoxycholate Citrate Agar	1067		Selective Isolation	Eur. Pharma						●			
Desoxycholate Lactose Agar	1025		Isolation / Enumeration			●							
Dextrose Agar	1021		Total Count		●								
E. Coli Coliforms Chromogenic Medium	1340		Selective Detection			●		●					
EE Broth	1362		Enumeration	ISO 21528-1			●						
Endo Agar Base	1118		Confirmation / Differentiation			●							
Fraser Broth Base	1182	6001	Enrichment Medium	ISO 11290-1					●				
Giolitti - Cantoni Broth	1287	5208	Detection	ISO 6888 / 5944							●		
Hektoen Enteric Agar	1030		Isolation / Differentiation				●			●			
Irgasan Ticarcillin & Potassium Chlorate	1361	6051	Enrichment Medium	ISO 10273									●
Kligler Iron Agar	1364		Presumptive Isolation	ISO 10273									●
Koser Citrate Broth	1200		Differentiation					●					
Lactose Broth	1206		Cultivation	Eur. Pharma		●				●			
Lauryl Sulfate Agar	1309		Selective Isolation / Enumeration			●							
Levine Agar (EMB)	1050		Isolation / Differentiation				●						
Listeria Agar Base Oxford	1133	6003	Selective Detection	ISO 11290-1					●				
Listeria Enrichment Broth Base Fraser	1120	6001/ 6002	Enrichment Medium	ISO 11290-1					●				
Listeria Agar Base Palcam	1141	6004	Selective / Differential Medium	ISO 11290-2					●				
Listeria Chromogenic Agar Base	1345	6031/ 6040	Selective Detection / Enumeration	ISO 11290-2					●				
Lysine Decarboxylase Broth	1176		Biochemical Confirmation	ISO 6579						●			
Macconkey Agar	1052		Isolation / Identification	Eur. Pharma			●						



# Processed Foods

	Cat. No.	Suppl. Cat. No.	Uses	Ref. Method	Aerobes mesophiles	Coliforms	Enterobacteria	Escherichia coli	Listeria monocytogenes	Salmonella/Shigella	Staphylococcus aureus	Yeast and molds	Yersinia
Malt Extract Agar	1038		Cultivation									●	
Malt Extract Broth	1245		Isolation / Enumeration									●	
Mannitol Nitrate Motility Medium	1509		Differentiation				●	●					
Mannitol Salt Agar (MSA)	1062		Isolation	Eur. Pharma							●		
Mio Medium	1510		Identification				●	●		●			
Moeller KCN Broth Base	1112		Differentiation				●	●		●			
Mossel EE Broth	1202		Selective Enrichment	Eur. Pharma		●							
MRSV Medium	1376		Detection							●			
MR-VP Medium	1512		Differentiation				●	●					
Muller Kauffmann Broth Base with Brilliant Green & Novobiocine (MKTTN)	1173		Selective Enrichment	ISO 6579						●			
Muller Kauffmann Tetrathionate Broth Base	1130		Selective Enrichment							●			
Nutrient Agar	1060		Cultivation	ISO 6579						●			
Nutrient Agar with Sodium Chloride	1355		Confirmation	ISO 21528-1			●						
OGA Medium (Oxytetracycline Glucose Agar)	1527	6018	Enumeration / Selection									●	
Osmophilic Agar	1057		Cultivation									●	
Peptone Sorbitol & Biliar Salts Broth (PSB Broth)	1298		Diluent	ISO 10273									●
Potato Dextrose Agar	1022		Identification/Cultivation/Enumeration	Eur. Pharma								●	
Potato Dextrose Broth	1261		Cultivation									●	
Rappaport Soy Broth (Vassiliadis)	1174		Selective Enrichment	ISO 6579						●			
Rose Bengal Agar + Chloramphenicol	1081		Cultivation/Selective Isolation									●	
Rose Bengal Agar + Dichloran + Chloramphenicol (DRBC Agar)	1160		Selective Cultivation									●	
Salmonella Chromogenic Agar	1122		Isolation							●			
Salmonella Shigella Agar with Sodium Desoxycholate & Calcium Chloride	1360		Selective Isolation/Differentiation	ISO 10273									●
SBF Broth	1384		Enrichment Medium							●			
Selenite Cystine Broth	1220		Selective Enrichment							●			
Sim Medium	1514	5205	Identification/Differentiation				●	●		●			
Sodium Selenite Broth	1222		Selective Isolation							●			
Staphylococcus Agar No. 110	1032		Isolation								●		
TBX Chromogenic Agar	1151		Selective Detection / Enumeration	ISO 16649-2				●					
Tetrathionate Broth Base (Muller Kauffmann)	1114		Selective Enrichment							●			
Triple Sugar Iron Agar (TSI)	1172		Biochemical Confirmation	ISO 6579						●			
Tryptone Soy Yeast Extract Agar (TSYEA)	1398		Cultivation	ISO 11290-2						●			
Tryptone Soy Yeast Extract Broth (TSYEB)	1339		Confirmation	ISO 11290-2						●			
Urea Agar Base (Christensen)	1110		Differentiation				●						
Urea Indol Broth	1227	5205	Identification				●	●		●			
Violet Red Bile Agar with Glucose (VRBG)	1092		Cultivation / Enumeration	Eur. Pharma			●						
Violet Red Bile Agar with Lactose (VRBL)	1093		Selective Detection / Enumeration	ISO 4832		●							
XLD Agar	1274		Selective Isolation	ISO 6579						●			
XLT4 Agar Base	1159	6062	Isolation							●			
Yersinia Selective Agar Base	1126	6033	Selective Medium										●

# Beer Industry

dehydrated culture media and detected bacteria

	Cat. No.	Suppl. Cat. No.	Uses	Ref. Method	Beer industry processes	Enterobacteria	Escherichia coli	Listeria monocytogenes	Yeast and molds
E. Coli Coliforms Chromogenic Medium	1340		Selective Detection				●		
Fraser Broth Base	1182	6001	Enrichment Medium	ISO 11290-1				●	
Koser Citrate Broth	1200		Differentiation			●	●		
Levine Agar (EMB)	1050		Isolation / Differentiation			●			
LMDA Agar	1084		Differentiation		●				
Macconkey Agar	1052		Isolation / Identification	Eur. Pharma		●			
Malt Extract Agar	1038		Cultivation						●
Malt Extract Broth	1245		Isolation / Enumeration						●
Mannitol Nitrate Motility Medium	1509		Differentiation			●	●		
Mio Medium	1510		Identification			●	●		
MR-VP Medium	1512		Differentiation			●	●		
NBB Agar Base, Modified	1438		Selective Detection		●				
NBB Broth Base, Modified	1440		Selective Detection		●				
Potato Dextrose Broth	1261		Cultivation						●
Raka - Ray Agar Base	1061		Selective Isolation		●				
Rose Bengal Agar + Chloramphenicol	1081		Cultivation / Selective Isolation						●
Rose Bengal Agar + Dichloran + Chloramphenicol (DRBC Agar)	1160		Selective Cultivation						●
Sim Medium	1514	5205	Identification/Differentiation			●	●		
Triple Sugar Iron Agar (TSI)	1046		Identification/Differentiation	Eur. Pharma		●	●		
Universal Beer Agar (UBA Medium)	1562		Fermentation Control		●				
Urea Agar Base (Christensen)	1110		Differentiation			●			
Urea Indol Broth	1227	5205	Identification			●	●		
WL Differential Agar	1026		Fermentation Control		●				
WL Nutrient Agar	1086		Fermentation Control		●				
Wort Agar	1316		Cultivation / Enumeration						●
Wort Broth	1444		Enumeration						●





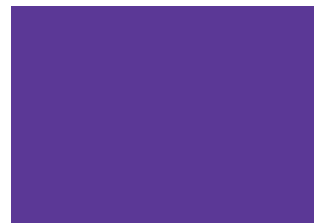
# Waste Water

dehydrated culture media and detected bacteria

	Cat. No.	Suppl. Cat. No.	Uses	Ref. Method	Aerobes mesophiles	Anaerobes count	Coliforms	Enterobacteria	Enterococci	Escherichia coli	Pseudomonas aeruginosa	Vibrio
A1 Medium	1252		Detection			●						
Acetamide Agar	1391		Confirmation								●	
Acetamide Broth	1155		Confirmation	UNE-EN 12780							●	
Alkaline Peptone Water	1407		Enrichment Medium									●
Anaerobic Agar	1000		Cultivation		●						●	
Asparagine Broth	1207		Presumptive Identification / Enumeration								●	
Azide Dextrose Broth	1422		Selective Enrichment							●		
BCP Agar	1051		Isolation			●						
Brilliant Green Bile Agar	1010		Enumeration			●						
Brilliant Green Bile Broth 2%	1228		Detection			●						
Cetrimide Agar Base	1102		Selective Isolation/Identification	Eur. Pharma							●	
Desoxycholate Lactose Agar	1025		Isolation / Enumeration			●						
E. Coli Coliforms Chromogenic Medium	1340		Selective Detection			●				●		
EC Medium	1522		Enumeration / Differentiation			●						
Endo Agar Base	1118		Confirmation / Differentiation			●						
Endo Les Agar Base	1137		Detection / Enumeration			●						
Enterococcus Confirmatory Agar	1018		Confirmation					●				
EVA Broth (Ethyl Violet Azide Broth)	1230		Confirmation					●				
Fecal Coliforms Agar Base (m-FC)	1127	6023	Detection / Enumeration			●						
Fecal Coliforms Broth Base	1121	6023	Detection / Enumeration							●		
King B Medium	1154		Identification / Enumeration	UNE-EN 12780							●	
Koser Citrate Broth	1200		Differentiation							●		
Lactose Broth	1206		Cultivation	Eur. Pharma		●						
Lauryl Sulfate Agar	1309		Selective Isolation/Enumeration			●						
Lauryl Sulfate Broth	1310		Detection			●						
Levine Agar (EMB)	1050		Isolation / Differentiation					●				
Macconkey Agar	1052		Isolation / Identification	Eur. Pharma				●				
Macconkey Agar No. 2	1035		Identification						●			
Macconkey Broth	1210		Detection	Eur. Pharma		●						

# Waste Water

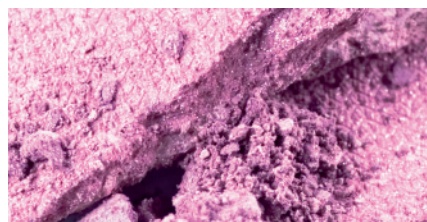
	Cat. No.	Suppl. Cat. No.	Uses	Ref. Method	Aerobes mesophiles	Anaerobes count	Coliforms	Enterobacteria	Enterococci	Escherichia coli	Pseudomonas aeruginosa	Vibrio
Mannitol Nitrate Motility Medium	1509		Differentiation					●		●		
m-El Chromogenic Agar Base	1412		Detection / Enumeration						●			
Minerals Modified Glutamate Broth	1365		Enumeration				●					
Mio Medium	1510		Identification					●		●		
MR-VP Medium	1512		Differentiation					●		●		
Nutrient Agar	1156		Identification / Enumeration	UNE-EN 12780							●	
Peptone Water with Lactose	1357		Confirmation	ISO 9308-1			●					
Pseudomonas CN Agar Base	1153		Identification / Enumeration	UNE-EN 12780							●	
Pseudomonas F Agar (King B)	1532		Identification	USP							●	
Pseudomonas P Agar (King A)	1531		Identification	USP							●	
Reinforced Clostridial Medium	1007		Cultivation / Enumeration	Eur. Pharma		●						
Schaedler Agar	1066		Cultivation			●						
Sim Medium	1514	5205	Identification/Differentiation					●		●		
Simmons Citrate Agar	1014		Differentiation					●		●		
TCBS Agar	1074		Selective Isolation									●
Triple Sugar Iron Agar (TSI)	1046		Identification/Differentiation	Eur. Pharma				●		●		
Trypticasein Glucose Extract Agar	1041		Total Count		●							
Tryptone Bile Salts Agar	1013		Detection / Enumeration	ISO 9308-1			●			●		
Tryptone Soy Agar	1138		Detection / Enumeration	ISO 9308-1			●			●		
Tryptophan Culture Broth	1237		Detection	ISO 9308-1			●			●		
TTC Chapman Agar	1076	6030	Enumeration	ISO 9308-1			●					
Urea Agar Base (Christensen)	1110		Differentiation					●				
Urea Indol Broth	1227	5205	Identification					●		●		
Violet Red Bile Agar with Glucose (VRBG)	1092		Cultivation / Enumeration	Eur. Pharma				●				
Wilkins Chalgren Medium	1503		Isolation / Cultivation			●						



# Cosmetic Industry

dehydrated culture media and detected bacteria

	Cat. No.	Suppl. Cat. No.	Uses	Ref. Method	Anaerobes count	Coliforms	Cosmetic testing	Enterobacteria	Escherichia coli	Pseudomonas aeruginosa	Staphylococcus aureus	Yeast and molds
Baird Parker Agar Base	1100	5129	Selective Isolation	Eur. Pharma								●
Cetrimide Agar Base	1102		Selective Isolation/Identification	Eur. Pharma						●		
E. Coli Coliforms Chromogenic Medium	1340		Selective Detection			●			●			
Eosin Methylene Blue Agar (EMB)	1039		Isolation / Differentiation			●		●				
Koser Citrate Broth	1200		Differentiation						●			
Letheen Agar Base Modified	1111		Quaternary Ammonium Compounds				●					
Letheen Broth Base Modified	1244		Microbiological Analysis				●					
LPT Dilution Broth	1399		Homogenization				●					
Macconkey Agar	1052		Isolation / Identification	Eur. Pharma				●				
Malt Extract Agar	1038		Cultivation									●
Malt Extract Broth	1245		Isolation / Enumeration									●
Mannitol Nitrate Motility Medium	1509		Differentiation					●	●			
Mannitol Salt Agar (MSA)	1062		Isolation	Eur. Pharma								●
MR-VP Medium	1512		Differentiation					●	●			
Neutralizing Agar	1449		Detection / Enumeration				●					
Potato Dextrose Broth	1261		Cultivation									●
Pseudomonas F Agar (King B)	1532		Identification	USP						●		
Pseudomonas P Agar (King A)	1531		Identification	USP						●		
Rose Bengal Agar + Chloramphenicol	1081		Selective Isolation									●
Sabouraud Maltose Broth	1213		Cultivation									●
Staphylococcus Agar No. 110	1032		Isolation									●
Thioglycollate Broth	1241		Sterility Test	USP	●		●					
Thioglycollate Fluid Medium	1508		Cultivation	USP	●		●					
Thioglycollate Medium w/o Indicator	1516		Cultivation / Isolation	USP	●		●					
Thioglycollate USP Medium	1533		Cultivation	USP ISO 7937	●		●					
Triple Sugar Iron Agar (TSI)	1046		Identification/Differentiation	Eur. Pharma				●	●			
Urea Agar Base (Christensen)	1110		Differentiation					●				



# Pharmaceutical Industry

## dehydrated culture media and detected bacteria

	Cat. No.	Suppl. Cat. No.	Uses	Ref. Method	Aerobes mesophiles	Anaerobes count	Antibiotic assay	Enterobacteria	Escherichia coli	Pseudomonas aeruginosa	Salmonella/Shigella	Staphylococcus aureus	Sterility testing	Yeast and molds
Antibiotic Medium No. 1 (Seed Agar)	1520		Standard Medium	USP			●							
Antibiotic Medium No. 2 (Base Agar)	1002		Standard Medium	USP			●							
Antibiotic Medium No. 3	1534		Standard Medium	USP			●							
Antibiotic Medium No. 5 (Streptomycin Test Agar)	1524		Streptomycin Assay	USP			●							
Antibiotic Medium No. 8 (Base Agar with low pH)	1004		Tetracycline / Other antibiotics	USP			●							
Antibiotic Medium No. 11 (Neomycin Test Agar)	1528		Neomycin / Other antibiotics	USP			●							
Antibiotic Medium No. 12	1525		Amphotericin B				●							
Baird Parker Agar Base	1100	5129	Selective Isolation	Eur. Pharma								●		
Bismuth Sulfite Agar (Wilson Blair)	1011		Selective Isolation	USP						●				
Cetrimide Agar Base	1102		Selective Isolation/Identification	Eur. Pharma						●				
Dextrose Agar	1021		Total Count		●									
Lactose Broth	1206		Cultivation	Eur. Pharma							●			
Levine Agar (EMB)	1050		Isolation / Differentiation				●							
Malt Extract Broth	1245		Isolation / Enumeration										●	●
Mannitol Salt Agar (MSA)	1062		Isolation	Eur. Pharma								●		
Mio Medium	1510		Identification				●	●		●				
Mueller Hinton Agar	1058		Sensitivity Test				●							
Mueller Hinton II Agar	1055		Sensitivity Test				●							
Mueller Hinton Broth	1214		Sensitivity Testing				●							
Potato Dextrose Agar	1022		Identification/Cultivation/Enumeration											●
Potato Dextrose Broth	1261		Cultivation											●
Pseudomonas F Agar (King B)	1532		Identification	USP						●				
Pseudomonas P Agar (King A)	1531		Identification	USP						●				
Sabouraud Dextrose Agar	1024		Cultivation	Eur. Pharma										●
Sabouraud Dextrose Broth	1205		Cultivation	Eur. Pharma										●
Sabouraud Maltose Broth	1213		Cultivation										●	●
Salmonella Chromogenic Agar	1122		Isolation								●			
Selenite Cystine Broth	1220		Selective Enrichment								●			
Thioglycollate Broth	1241		Sterility Test	USP	●									●
Thioglycollate Fluid Medium	1508		Cultivation	USP	●									●
Thioglycollate Medium without Indicator	1516		Cultivation / Isolation	USP	●									●
Thioglycollate USP Medium	1533		Cultivation	USP ISO 7937	●									●
Triple Sugar Iron Agar (TSI)	1046		Identification / Differentiation	Eur. Pharma			●	●		●				
Vogel-Johnson Agar	1079		Isolation										●	
Wilkins Chalgren Medium	1503		Isolation / Cultivation		●									
Wilkins Chalgren II Medium	1568		Sensitivity Test		●									
XLD Agar (Xylose Lysine Desoxycholate)	1080		Isolation	Eur. Pharma							●			

# Dehydrated Culture Media

uses and related industries

	Cat. No.	Suppl. Cat. No.	Uses	Ref. Method	Meat and Fish Industry	Water and Beverages	Dairy Products	Bakery	Processed Foods	Beer Industry	Wastewater	Cosmetic Industry	Pharmaceutical Industry
A1 Medium	1252		Detection of <i>Coliforms</i>			●					●		
Acetamide Agar	1391		Confirmation of <i>Pseudomonas aeruginosa</i>			●					●		
Acetamide Broth	1155		Confirmation of <i>Pseudomonas aeruginosa</i>	UNE-EN 12780		●					●		
Acetate Differential Agar	1192		Diferentiation of species of <i>Shigella</i> , <i>E.coli</i> and non-fermentable <i>Coliforms</i>		●		●						
Alkaline Peptone Water	1407		Enrichment of <i>Vibrio</i> species		●						●		
Anaerobic Agar	1000		Cultivation of anaerobes, specially <i>Clostridium</i>		●	●	●	●			●		
Antibiotic Medium No. 1 (Seed Agar)	1520		Standard medium used for the preparation of the seed layer in Antibiotic Assays	USP									●
Antibiotic Medium No. 2 (Base Agar)	1002		Standard medium used for the preparation of the seed layer in Antibiotic Assays	USP									●
Antibiotic Medium No. 3	1534		Standard medium for use in Antibiotic Assays	USP									●
Antibiotic Medium No. 5 (Streptomycin Test Agar)	1524		Potency assay of Streptomycin	USP									●
Antibiotic Medium No. 8 (Base Agar with Low pH)	1004		Plate assay of tetracycline and other antibiotics	USP									●
Antibiotic Medium No. 11 (Neomycin Test Agar)	1528		Potency assay of neomycin and other antibiotics	USP									●
Antibiotic Medium No. 12	1525		Amphotericin B Testing										●
Asparagine Broth	1207		Presumptive identification and enumeration (MPN) of <i>Pseudomonas aeruginosa</i>			●					●		
Azide Dextrose Broth	1422		<i>Enterococcus</i> preliminary test and selective enrichment			●					●		
Bacillus Cereus Selective Agar Base	1124	6021/ 5152	Enumeration and isolation of <i>Bacillus cereus</i>		●			●					
Baird Parker Agar Base	1100	5129	Selective isolation of coagulase-positive <i>Staphylococci</i>	Eur. Pharma								●	●
Baird Parker Agar Base	1319	5129	Selective isolation of coagulase-positive <i>Staphylococci</i>	ISO 6888-1	●		●	●	●				
Baird Parker Agar Base (RPF)	1319	6024	Selective isolation of coagulase-positive <i>Staphylococci</i>	ISO 6888-2	●		●	●	●				
BCP Agar	1051		Isolation of <i>Coliforms</i>			●		●	●		●		
BCP Glucose Agar	1320		Differentiation and enumeration of <i>Enterobacteriaceae</i>	ISO 21528-2	●			●	●				
Bile Esculin Agar	1031		Isolation and presumptive identification of <i>Group D Streptococci</i>				●						
Bile Esculin Azide Agar	1005		Selective medium for isolation and presumptive identification of <i>Group D Streptococci</i>	ISO 7899-2		●							
Bismuth Sulfite Agar (Wilson Blair)	1011		Highly selective medium for isolation of <i>Salmonella</i> spp, particularly <i>Salmonella typhi</i>	USP	●		●	●	●				●
Blood Agar Base No. 2	1328		Confirmation	ISO 7932	●								
Blood Free Campylobacter Agar Base	1129	6053	Selective medium used with supplements, for isolation of <i>Campylobacter jejuni</i> , <i>C.coli</i> and <i>C.laudis</i>		●		●						
Brain Heart Infusion Broth	1331		Confirmation of positive coagulase <i>Staphylococcus</i>	ISO 6888-1	●								
Brilliant Green Agar	1078		Highly selective medium for isolation of <i>Salmonella</i>	Eur. Pharma	●			●	●				
Brilliant Green Bile Agar	1010		Determination of the degree of contamination by <i>Coliforms</i>			●					●		
Brilliant Green Bile Broth 2%	1228		Detection of <i>Coliforms</i>			●		●	●		●		
Brilliant Green Selenite Broth	1221		Selective enrichment of <i>Salmonella</i> species		●		●	●	●				
Brilliant Green Selenite Broth II	1219		Selective enrichment of <i>Salmonella</i> species		●								
Brilliant Green Tetrathionate Bile Broth	1253		Selective enrichment of <i>Salmonella</i>	Eur. Pharma	●		●	●	●				
Bryant & Burkey Base Broth (Modified with Resazurine)	1247		Detection of lactate fermenting clostridial species				●						
Buffered Peptone Water	1402		Diluent for the homogenization of samples	ISO 6579	●		●						
Buti Medium For Milk	1184		Detection of <i>Clostridium tyrobutyricum</i>				●						
Carbohydrates Utilization Broth	1342		Confirmation of <i>Listeria</i>	ISO 11290-2	●	●	●	●	●				
Cetrimide Agar Base	1102		Selective isolation and identification of <i>Pseudomonas aeruginosa</i>	Eur. Pharma		●					●	●	●
Chapman Stone Agar	1017		Selective and differential medium for isolation of <i>Staphylococci</i>		●		●	●	●				

# Dehydrated Culture Media

	Cat. No.	Suppl. Cat. No.	Uses	Ref. Method	Meat and Fish Industry	Water and Beverages	Dairy Products	Bakery	Processed Foods	Beer Industry	Wastewater	Cosmetic Industry	Pharmaceutical Industry
Chloramphenicol Agar	1301		Selective medium for isolation and enumeration of molds	ISO 7954			●						
Clostridium Perfringens Agar Base (m-CP)	1132		Enumeration and isolation of <i>Clostridium perfringens</i>			●							
DCLS Agar	1045		Selective medium for isolation of <i>Salmonella</i> and <i>Shigella</i> . It is also used to isolate <i>Vibrio cholerae</i>		●		●		●				
Desoxycholate Agar	1020		Isolation and enumeration of <i>Coliforms</i>				●						
Desoxycholate Citrate Agar	1067		Highly selective medium for isolation of enteric pathogens, especially <i>Salmonella</i> and <i>Shigella</i>	Eur. Pharma	●		●		●				
Desoxycholate Lactose Agar	1025		Isolation and enumeration of <i>Coliforms</i>		●	●	●		●		●		
Dextrose Agar	1021		Total counts of microorganisms and for general laboratory purposes		●	●	●	●	●				●
Differential Reinforced Clostridial Broth	1416		Enumeration of all clostridia by the MPN method		●		●	●					
E. Coli Coliforms Chromogenic Medium	1340		Selective medium for simultaneous detection of <i>E.coli</i> and other <i>Coliforms</i>		●	●	●	●	●	●	●	●	
EC Medium	1522		Differentiation and enumeration of <i>Coliforms</i>			●					●		
EE Broth	1362		Enumeration of <i>Enterobacteriaceae</i>	ISO 21528-1	●		●	●	●				
Elliker Medium	1539		Cultivation of <i>Streptococci</i> and <i>Lactobacilli</i>				●						
Endo Agar Base	1118		Confirmation and differentiation of <i>Coliforms</i>		●	●	●		●		●		
Endo Les Agar Base	1137		Detection and enumeration of <i>Coliforms</i> in water using membrane-filter technique			●					●		
Enterobacter Sakazakii Isolation Agar Chromogenic (ESIA)	1446		Isolation of <i>Enterobacter Sakazakii</i>	ISO 22964			●						
Enterococcus Confirmatory Agar	1018		Confirmation of the presence of <i>Enterococci</i>			●					●		
Eosin Methylene Blue Agar (EMB)	1039		Isolation and differentiation of <i>Coliforms</i> from other <i>Enterobacteria</i>			●						●	
ESTY Broth	1254		Selective medium for cultivation of <i>Streptococcus thermophilus</i> in yogurt				●						
ESTY Medium	1555		Selective medium for enumeration of <i>Streptococcus thermophilus</i> in yogurt				●						
EVA Broth (Ethyl Violet Azide Broth)	1230		Confirmation of <i>Enterococci</i> and as a detector of fecal contamination			●					●		
Ewing Malonate Broth Modified	1212		Differentiation of <i>Enterobacteria</i> , especially <i>Salmonella arizonae</i>		●		●						
Fecal Coliforms Agar Base (m-FC)	1127	6023	Membrane-filter medium for detection and enumeration of fecal <i>Coliforms</i>			●					●		
Fecal Coliforms Broth Base	1121	6023	Detection and enumeration of fecal <i>Coliforms</i> through the membrane-filter technique			●					●		
Fraser Broth Base	1182	6001	Enrichment medium for detection and isolation of <i>Listeria</i>	ISO 11290-1	●		●	●	●	●			
Gelatin Lactose Medium	1526		Confirmation of <i>Clostridium perfringens</i>		●	●							
Giolitti - Cantoni Broth	1287	5208	Detection of <i>Staphylococcus aureus</i>	ISO 6888 / 5944	●		●	●	●				
Glucose Chloramphenicol Agar	1094		Selective medium for isolation and enumeration of yeast and molds				●						
Glucose Chloramphenicol Broth	1258		Selective medium for isolation and enumeration of yeast and molds				●						
Hektoen Enteric Agar	1030		Isolation and differentiation of Gram-negative enteric bacteria		●		●	●	●				
Irgasan Ticarcillin & Potassium Chlorate	1361	6051	Enrichment medium for <i>Yersinia enterocolitica</i>	ISO 10273	●		●		●				
KAA Confirmatory Agar	1027		Isolation and confirmation of Lancefield Group D <i>Streptococci</i>				●						
KAA Presumptive Broth	1209		Presumptive detection of Lancefield Group D <i>Streptococci</i> from foods				●						
King B Medium	1154		Identification and enumeration of <i>Pseudomonas aeruginosa</i> by membrane-filtration technique	UNE-EN 12780		●					●		
Kligler Iron Agar	1364		Presumptive test of <i>Yersinia enterocolitica</i>	ISO 10273	●		●		●				
Koser Citrate Broth	1200		Differentiation of <i>E.coli</i> from <i>Enterobacter</i> on basis of citrate utilization		●	●	●		●	●	●	●	
Lactose Broth	1206		Cultivation of <i>Coliforms</i> and <i>Salmonella</i>	Eur. Pharma	●	●	●	●	●		●		●
Lactose Sulfite Broth Base	1009		Selective medium for detection and enumeration of <i>Clostridium perfringens</i>	Eur. Pharma	●	●							
Lauryl Sulfate Agar	1309		Selective isolation and enumeration of <i>Coliforms</i>			●		●	●		●		
Lauryl Sulfate Broth	1310		Detection of <i>Coliforms</i> (APHA)			●					●		
Lauryl Sulfate Tryptose Broth Modified	1445		Selective enrichment medium for <i>Enterobacter sakazakii</i>	ISO 22964			●						

# Dehydrated Culture Media

	Cat. No.	Suppl. Cat. No.	Uses	Ref. Method	Meat and Fish Industry	Water and Beverages	Dairy Products	Bakery	Processed Foods	Beer Industry	Wastewater	Cosmetic Industry	Pharmaceutical Industry
Legionella Cye Agar Base	1311	6022/ 6025	Selective medium for cultivation of <i>Legionella</i>			●							
Letheen Agar Base Modified	1111		Determination of bacterial activity of quaternary ammonium compounds										●
Letheen Broth Base Modified	1244		Microbiological analysis										●
Levine Agar (EMB)	1050		Isolation and differentiation of <i>Enterobacteria</i>		●		●	●	●	●	●		●
Listeria Agar Base Oxford	1133	6003	Selective medium for detection of <i>Listeria monocytogenes</i>	ISO 11290-1	●	●	●	●	●				
Listeria Enrichment Broth Base Fraser	1120	6001/ 6002	Enrichment medium for detection and isolation of <i>Listeria</i>	ISO 11290-1	●	●	●	●	●				
Listeria Agar Base Palcam	1141	6004	Selective and differential medium for detection of <i>Listeria monocytogenes</i>	ISO 11290-2	●	●	●	●	●				
Listeria Chromogenic Agar Base	1345	6031/ 6040	Selective medium for detection and enumeration of <i>Listeria monocytogenes</i>	ISO 11290-2	●	●	●	●	●				
LMDA Agar	1084		Differentiation of a high variety of bacteria							●			
LPT Dilution Broth	1399		Solvent for homogenization of samples										●
Lysine Decarboxylase Broth	1208		Identification of microorganisms, especially <i>enteric bacilli</i> , based on the decarboxylation of lysine		●	●	●	●					
Lysine Decarboxylase Broth	1176		Biochemical confirmation of <i>Salmonella</i>	ISO 6579	●		●	●	●				
Lysine Iron Agar	1044		Studies of decarboxylation of lysine for rapid differentiation of <i>Salmonella arizonae</i>		●								
M17 Agar	1318		Cultivation and enumeration of lactic <i>Streptococci</i>				●						
Macconkey Agar	1052		Isolation and identification of <i>Enterobacteriaceae</i>	Eur. Pharma	●		●	●	●	●	●	●	
Macconkey Agar No. 2	1035		Identification of <i>Enterococci</i> in the presence of <i>Coliforms</i> and non lactose-fermenters			●	●				●		
Macconkey Agar without Crystal Violet	1037		Cultivation of <i>Staphylococci</i> and <i>Enterococci</i> and differentiation of enteric microorganisms			●							
Macconkey Broth	1210		For detection of <i>Coliforms</i>	Eur. Pharma		●	●				●		
Malt Extract Agar	1038		Cultivation of fungi and yeasts		●		●	●	●	●		●	
Malt Extract Broth	1245		Isolation and enumeration of yeast and molds, as well as for sterility tests		●		●	●	●	●		●	●
Mannitol Nitrate Motility Medium	1509		Rapid differentiation of <i>Enterobacteria</i>		●		●	●	●	●	●	●	
Mannitol Salt Agar (MSA)	1062		Isolation of pathogenic <i>Staphylococci</i>	Eur. Pharma	●		●	●	●			●	●
m-El Chromogenic Agar Base	1412		Detection and enumeration of <i>Enterococcus</i> through membrane filtration technique			●					●		
Minerals Modified Glutamate Broth	1365		Enumeration of <i>Coliforms</i>			●					●		
Mio Medium	1510		Identification of <i>Enterobacteriaceae</i>		●		●	●	●	●	●		●
Moeller KCN Broth Base	1112		Differentiation of <i>enteric bacilli</i>		●			●	●				
Mossel EE Broth	1202		Selective enrichment of <i>Enterobacteriaceae</i> , specially <i>Salmonella</i> and <i>Coliforms</i>	Eur. Pharma	●		●	●	●				
MRS Agar	1043		Cultivation of <i>Lactobacilli</i> in general		●		●						
MRS Broth	1215		Cultivation of <i>Lactobacilli</i> in general		●		●						
MRSV Medium	1376		A semi-solid medium for detection of motile <i>Salmonella</i> species		●		●	●					
MR-VP Medium	1512		Differentiation of <i>Escherichia-Enterobacter</i> group (Methyl Red and Voges-Proskauer reactions)		●	●	●	●	●	●	●	●	
Mueller Hinton Agar	1058		Sensitivity Test										●
Mueller Hinton II Agar	1055		Sensitivity Test										●
Mueller Hinton Broth	1214		Sensitivity testing to antibiotics in liquid media										●
Muller Kauffmann Broth Base with Brilliant Green & Novobiocine (MKTTN)	1173		Liquid medium for selective enrichment of <i>Salmonella</i>	ISO 6579	●		●	●	●				
Muller Kauffmann Tetrathionate Broth Base	1130		Selective enrichment of <i>Salmonella</i>		●		●	●					
NBB Agar Base, Modified	1438		Selective medium used for detection of contaminating/ spoilage micro-organisms							●			
NBB Broth Base, Modified	1440		Selective medium used for detection of contaminating/ spoilage micro-organisms							●			
Neutralizing Agar	1449		Neutralization of antimicrobial chemicals										●

# Dehydrated Culture Media

	Cat. No.	Suppl. Cat. No.	Uses	Ref. Method	Meat and Fish Industry	Water and Beverages	Dairy Products	Bakery	Processed Foods	Beer Industry	Wastewater	Cosmetic Industry	Pharmaceutical Industry
Nitrate Motility Base Medium	1565		Confirmation of <i>Clostridium perfringens</i>		●	●							
Nutrient Agar	1060		Cultivation of non-fastidious microorganisms	ISO 6579	●		●	●	●				
Nutrient Agar	1156		Identification and enumeration of <i>Pseudomonas aeruginosa</i> by membrane-filtration technique	UNE-EN 12780		●					●		
Nutrient Agar with Sodium Chloride	1355		Confirmation of <i>Enterobacteriaceae</i>	ISO 21528-1	●		●	●	●				
OGA Medium (Oxytetracycline Glucose Agar)	1527	6018	Enumeration and selection of yeast and molds		●		●	●	●				
Orange Serum Agar	1307		Isolation and detection of different acid tolerant pathogens in citrus products			●							
Osmophilic Agar	1057		Cultivation of osmophilic yeasts				●	●	●				
Peptone Water with Lactose	1357		Confirmation of membrane results for total <i>Coliforms</i>	ISO 9308-1		●					●		
Peptone Sorbitol & Biliar Salts Broth (PSB Broth)	1298		Diluent	ISO 10273	●		●		●				
Potato Dextrose Agar	1022		Identification, cultivation and enumeration of yeasts and molds	Eur. Pharma	●		●	●	●				●
Potato Dextrose Broth	1261		Cultivation of yeasts and molds		●		●	●	●	●		●	●
Pseudomonas Agar Base	1356	6036	Isolation of <i>Pseudomonas</i>	ISO 13720	●								
Pseudomonas CN Agar Base	1153		Identification and enumeration of <i>Pseudomonas aeruginosa</i> by membrane-filtration technique	UNE-EN 12780		●					●		
Pseudomonas F Agar (King B)	1532		Identification of <i>Pseudomonas aeruginosa</i> based on production of fluorescein	USP							●	●	●
Pseudomonas P Agar (King A)	1531		Identification of <i>Pseudomonas aeruginosa</i> based on production of pyocyanin	USP							●	●	●
Raka - Ray Agar Base	1061		Selective medium to isolate lactic-acid bacteria							●			
Rappaport Soy Broth (Vassiliadis)	1174		Liquid medium for selective enrichment of <i>Salmonella</i>	ISO 6579	●		●	●	●				
Reinforced Clostridial Medium	1007		Cultivation and enumeration of <i>Clostridium</i> and other anaerobes	Eur. Pharma	●		●	●			●		
Rogosa SL Agar	1096		Selective medium for cultivation of <i>Lactobacilli</i>		●								
Rogosa SL Broth	1234		Selective medium for cultivation of <i>Lactobacilli</i>		●								
Rose Bengal Agar + Chloramphenicol	1081		Cultivation and selective isolation of yeast and molds		●		●	●	●	●		●	
Rose Bengal Agar + Dichloran + Chloramphenicol (DRBC Agar)	1160		Selective medium for cultivation of yeast and molds				●	●	●	●			
Rothe Broth (Glucose Broth with Azide)	1238		Quantitative determination of fecal <i>Streptococci</i>				●						
R2A Agar	1071		Total aerobic count	Eur. Pharma		●							
Sabouraud Dextrose Agar	1024		Cultivation of yeast and molds	Eur. Pharma									●
Sabouraud Dextrose Broth	1205		Cultivation of yeast and molds	Eur. Pharma									●
Sabouraud Maltose Broth	1213		Cultivation of yeast, molds and acidophilic bacteria, as well as for sterility tests									●	●
Salmonella Chromogenic Agar	1122		Isolation of <i>Salmonella</i>		●		●	●	●				●
Salmonella Shigella Agar (SS)	1064		Selective medium for isolation of <i>Salmonella</i> and <i>Shigella</i>		●								
Salmonella Shigella Agar with Sodium Desoxycholate & Calcium Chloride	1360		Selective medium for isolation and differentiation of <i>Yersinia enterocolitica</i>	ISO 10273	●		●		●				
Salmonella Shigella Modified Agar	1186		Selective medium for isolation of <i>Salmonella</i> and <i>Shigella</i>		●								
San Francisco Medium	1413		Cultivation of <i>Lactobacillus</i>		●		●						
SBF Broth	1384		Enrichment medium for <i>Salmonella</i>		●		●	●	●				
Schaedler Agar	1066		Cultivation of anaerobic microorganisms from contaminated specimens								●		
Selenite Cystine Broth	1220		Selective enrichment of <i>Salmonella</i> and some strains of <i>Shigella</i>		●		●	●	●				●
Sim Medium	1514	5205	Identification and differentiation of <i>Enterobacteriaceae</i>		●	●	●	●	●	●	●		
Simmons Citrate Agar	1014		Determination of citrate utilization by <i>Enterobacteriaceae</i>			●					●		
Slanetz-Bartley Medium	1109		Detection and enumeration of intestinal <i>Enterococci</i> by membrane-filtration technique	ISO 7899-2		●							
Sodium Selenite Broth	1222		Selective isolation of <i>Salmonella</i>		●		●	●	●				
SPS Agar	1082		Isolation of <i>Clostridium perfringens</i>		●								



# Dehydrated Culture Media

	Cat. No.	Suppl. Cat. No.	Uses	Ref. Method	Meat and Fish Industry	Water and Beverages	Dairy Products	Bakery	Processed Foods	Beer Industry	Wastewater	Cosmetic Industry	Pharmaceutical Industry
Standard Methods Agar (PCA)	1056		Total microbial plate count	ISO 4833	●		●						
Standard Methods Agar with Powdered Milk	1033		Bacterial plate count of microorganisms (APHA* Formula)				●						
Staphylococcus Agar No. 110	1032		Isolation of <i>Staphylococci</i>		●		●	●	●				●
TBX Chromogenic Agar	1151		Selective medium for detection and enumeration of <i>E.coli</i>	ISO 16649-2	●		●	●	●				
TCBS Agar	1074		Selective isolation of <i>Vibrio spp</i>		●						●		
Tetrathionate Broth Base (Muller Kauffmann)	1114		Selective enrichment of <i>Salmonella</i> species		●		●	●	●				
Thioglycollate Broth	1241		Sterility assays of biological and pharmaceutical products	USP								●	●
Thioglycollate Fluid Medium	1508		Cultivation of aerobic and anaerobic microorganisms in sterility tests	USP								●	●
Thioglycollate Medium without Indicator	1516		Cultivation and isolation of obligate and facultative aerobic, anaerobic and microaerophilic bacteria for sterility tests	USP								●	●
Thioglycollate USP Medium	1533		Cultivation of aerobic and anaerobic microorganisms in sterility tests	USP ISO 7937	●							●	●
Triple Sugar Iron Agar (TSI)	1046		Identification and differentiation of <i>Enterobacteria</i>	Eur. Pharma		●				●	●	●	●
Triple Sugar Iron Agar (TSI)	1172		Biochemical confirmation of <i>Salmonella</i>	ISO 6579	●		●	●	●				
Trypticasein Glucose Extract Agar	1041		Plate count enumeration of bacteria			●					●		
Tryptone Bile Salts Agar	1013		Detection and enumeration of <i>E. coli</i> and other <i>Coliforms</i>	ISO 9308-1		●					●		
Tryptone Soy Agar	1138		Detection and enumeration of <i>E.coli</i> and other <i>Coliforms</i>	ISO 9308-1		●					●		
Tryptone Soy Yeast Extract Agar (TSYEA)	1398		Cultivation of <i>Listeria spp</i>	ISO 11290-2	●	●	●	●	●				
Tryptone Soy Yeast Extract Broth (TSYEB)	1339		Confirmation of <i>Listeria monocytogenes</i>	ISO 11290-2	●	●	●	●	●				
Tryptophan Culture Broth	1237		Detection of <i>E. coli</i> and other <i>Coliforms</i> by indole production	ISO 9308-1		●					●		
Tryptose Sulfite Broth	1378		Selective medium for <i>Clostridium perfringens</i>		●	●							
TSC Agar Base	1029	6020/5152	Detection and enumeration of <i>Clostridium perfringens</i>	ISO 7937	●								
TSN Agar	1075		Selective isolation of <i>Clostridium perfringens</i>		●								
TTC Chapman Agar	1076	6030	Enumeration of <i>Coliforms</i> by membrane-filtration technique	ISO 9308-1		●					●		
Universal Beer Agar (UBA Medium)	1562		Control of industrial fermentation processes							●			
Urea Agar Base (Christensen)	1110		Differentiation of <i>Enterobacteria</i> on the basis of urease production		●			●	●	●	●	●	
Urea Indol Broth	1227	5205	Identification of <i>Enterobacteria</i> on the basis of urease and indole production and the transdeamination of tryptophan (TDA)		●	●	●	●	●	●	●		
Violet Red Bile Agar with Glucose (VRBG)	1092		Cultivation and enumeration of <i>Enterobacteria</i>	Eur. Pharma	●	●	●	●	●		●		
Violet Red Bile Agar with Lactose (VRBL)	1093		Selective medium for detection and enumeration of <i>Coliforms</i>	ISO 4832	●		●	●	●				
Vogel-Johnson Agar	1079		Isolation of <i>Staphylococcus aureus</i>										●
Wilkins Chalgren Medium	1503		Susceptibility testing as well as for isolation and culture of anaerobic bacteria in general								●		●
Wilkins Chalgren II Medium	1568		General development and microbial sensitivity tests of anaerobic agents										●
WL Differential Agar	1026		Control of industrial fermentation processes							●			
WL Nutrient Agar	1086		Determination of microbial flora							●			
Wort Agar	1316		Cultivation and enumeration of yeasts			●	●			●			
Wort Broth	1444		Enumeration and count of yeasts			●	●			●			
XLD Agar	1274		Solid selective medium for isolation of <i>Salmonella</i>	ISO 6579	●		●	●	●				
XLD Agar (Xylose Lysine Desoxycholate)	1080		Isolation of enteropathogenic bacteria, especially from the genus of <i>Shigella</i> and <i>Salmonella</i>	Eur. Pharma		●							●
XLT4 Agar Base	1159	6062	Isolation of pathogenic <i>Enterobacteria</i> , especially <i>Salmonella</i>		●	●	●	●	●				
Yeast Extract Agar	1049		Nutrient medium for enumeration of a wide spectrum of bacteria, yeast and molds	ISO 6222		●							
Yeast Extract Agar (for molds)	1312		Cultivation of yeast and molds				●						
Yersinia Selective Agar Base	1126	6033	Selective Medium for <i>Yersinia enterocolitica</i>		●		●		●				



**pronadisa**  
Micro & Molecular Biology

LABORATORIOS CONDA

C/ La Forja, 9 • 28850 Torrejón de Ardoz • MADRID

Phone + 34 91 761 02 00

Fax + 34 91 761 02 06 / 91 656 82 28

comercial@condalab.com • export@condalab.com

[www.condalab.com](http://www.condalab.com)

Life is a great  
*Discovery*